

DENSO

Bar code scanner

BAR CODE HANDY TERMINAL

BHT-8000 Series



A new generation of terminals. BHT-8000 series debut.

Easy to use and portable, the BHT-8000 series sets a new standard for compact handy terminals.

Sophisticated reading capability facilitates operating efficiency

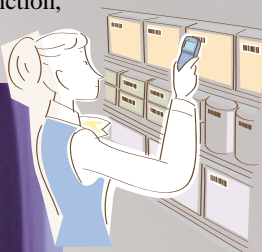
Equipped with an advanced scanning system, the BHT-8000 series can read even wide, high density, low-PCS labels smoothly.



Shipment inspection

Large liquid crystal display provides enhanced visibility

The compact body features a large 128 x 64-dot display. With the advanced layout function, you can reconfigure the display to meet your needs.



Picking

Adapts to any situation, anywhere, with superior operability



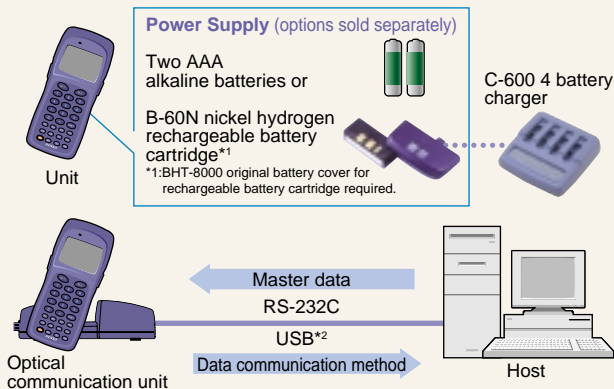
Logistics work

With trigger switches on both sides and large magic keys, it can be carried in many ways. While the body is compact, the key pitch is a wide 13.7 mm, enabling you to improve input speed. The keys are made of resin, so you don't have to worry about the letters disappearing.



Multi-functional system configuration

Specifications



*2: Scheduled for release

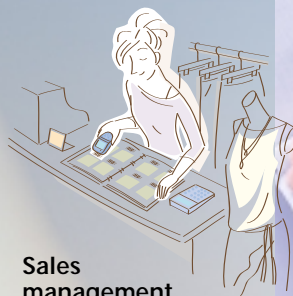


Ample memory ensures reliable data collection

With a 4MB Flash File System, data can be backed up reliably.

Compact, slim body can be used effortlessly for long periods

The pocket size unit is lightweight, portable, and easy to use.



Sales management



Vibrator ensures reliable reading confirmation

In addition to LED and beeping functions, the unit is equipped with a vibrator. Confirmation of successful operation can be obtained in any environment.

Heavy duty? Or lightweight?

Construct the optimum application for your business.

Tool for Development and Communication

Operation can start right out of the package

Easy Pack Pro

The program is in the form of a dialog, so you can collect and transmit bar code data easily.

BHT-BASIC 3.5 Compiler

Development that makes full use of the functions of the BHT is possible.

- Creation of source in BASIC
- Split compile function that creates programs from multiple sources,
- Function for creating library for simple reuse of multiple programs

Remote Debugger

(scheduled for release)

Online debugger allows dramatic shortening of development lead time

- The BHT can be connected directly to a PC for confirmation of operation.
- Function for debugging, including reading, display, and entry, is included.

Ir Transfer Utility C

(For RS-232C communication)

Utility software for transferring data from the BHT

- Programs and data can be transferred in either direction between the BHT and a PC.
- An executable DLL pack that can be called from Windows applications is available.

Step1 Determine specifications

Step2 Create program

Step3 Compile

Step4 Debug

Step5 Download

Step6 Begin operation

Step7 Upload

Program Creation Screen

File1 Input ID? 1:Yes 2:No	File1: Item A 1: Barcode&Key 2: Barcode 3: Key
----------------------------------	---

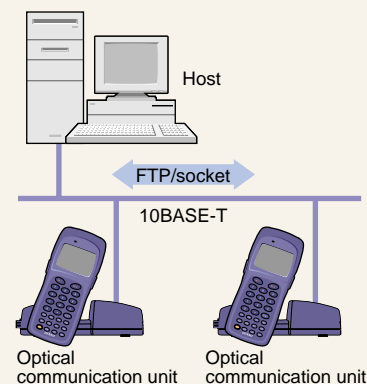
Set each item following the menu on the screen.

BHT application is completed

Data Collection Screen

File1	02/02/08
ITEM NO:	123450
QUANTITY:	
EK 00001/32767	13:45

Optical communication unit for Ethernet connection*2



Optical communication unit

Optical communication unit

BHT-8000 Specifications

		BHT-8000/8000D	
Controller	CPU	32bit RISC	
	Memory	RAM:512kB ROM(Flash Memory):4MB	
	User's area	2.3MB	
Display	Display device	FSTN liquid crystal display	
	Size	128dot x 65dot	
	Capability*1	ANK	21chars x 8lines
		Kanji	10chars x 5lines
Back light	LED(orange)		
Scanner	Method	Advanced scanning	
	Scanning-area	Refer to the scanning performance chart shown below	
	Resolution	BHT-8000:0.10mm, BHT-8000D:0.15mm	
	Readable codes	JAN/EAN/UPC(with supplemental) CODE39,CODABAR(NW-7A) CODE128,ITF,STF,CODE93,EAN-128	
Interface	Keyboard	24keys + 2Magic keys + 2Trigger switches	
	LED	Red,Green 2 color LED	
	Buzzer	Frequency variable,volume:4steps	
	Vibrator	Yes	
Communications	Optical I/F	IrDA-SIR Ver 1.2(Low Power)compliant ~115.2kbps	
	Connector I/F	RS-232C ~115.2kbps	
Auxiliary Functions	Calendar clock, resume function, low-battery indication,remote wake-up function		
Power supply	Main battery	Two AAA alkaline batteries or Ni-MH battery cartridge(selective option)	
	Operation hours*2	Two AAA alkaline batteries:Approx. 80hour Ni-MH battery cartridge:Approx. 30hour (Two times scanning of barcode in 10 seconds.)	
Environment Requirements	Temperature	operating:-5~50 un-operating:-10~60	
	Drip-proof	JIS drip-proof *3	
	Drop impact strength*4	Six surfaces of unit, five times each(total 30 times) from 1.2 m(47.2 inches) onto concrete floor	
Weight	Approx.160g		

*1: Maximum number of characters displayed. May differ according to font size.

*2: Operation hours may differ according to operating conditions.

*3: No detrimental effect found when water is dripped on the device at an angle of 15° from the vertical.

*4: Figures are provided for reference only and are not guaranteed.

CU-8000 Specifications

		CU-8001	CU-8002
Communications	BHT CU	IrDA-SIR Ver 1.2(Low Power)compliant	
		Speed	~115.2kbps
	CU HOST	Method	RS-232C*
Status Indicator	Connector	Dsub9-P*	
	LEDs	4(Power,communications,charge)	
Battery Charger	Charge time	Battery loaded in BHT-8000(D)	8-hour
		Battery alone	8-hour
Power Source	AC/DC adapter		from a connection part

* Ethernet (10BASE-T) and USB will be available soon.

Accessories

Hand strap



Options(sold separately)

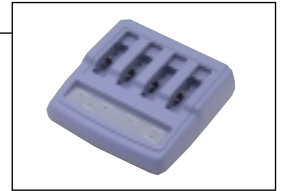
Optical communication unit

CU-8001
(with battery charger)
CU-8002
(communication only)



Battery charger

C-600



Nickel hydrogen battery cartridge B-60N

(BHT-8000 original battery cover for rechargeable battery cartridge required)

Software(sold separately)

BHT-BASIC 3.5 Compiler

Remote Debugger(scheduled for release)

Ir transfer utility C

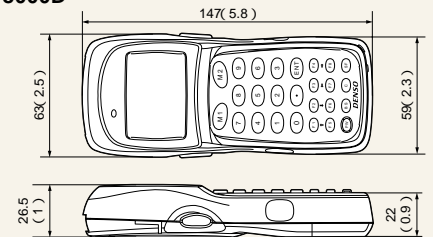
Ir transfer utility C DLL pack

Easy Pack Pro

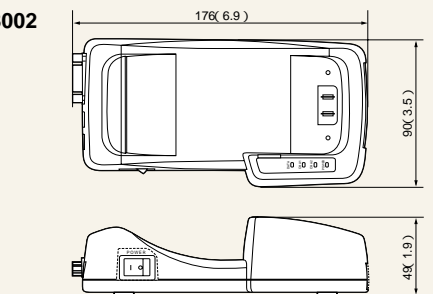
Dimensions

Unit:mm(inches)

BHT-8000/8000D

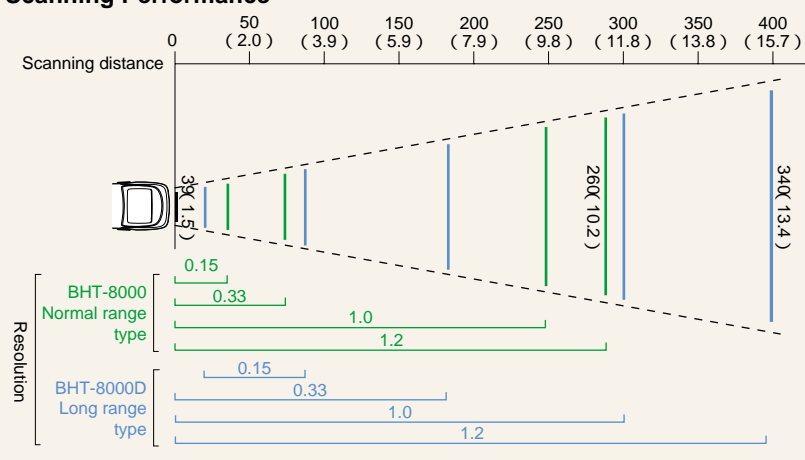


CU-8001/8002



Scanning Performance

Unit:mm(inches)



Before use, read the user's manual carefully.

Use your machines only at the rated voltage.

Specifications are subject to change without notice.

Information in this catalogue is current as of February 2002.

▲ AVOID EXPOSURE-LASER LIGHT IS EMITTED FROM THIS APERTURE ▲

CAUTION
LASER LIGHT-DO NOT STARE INTO BEAM
1mW MAXIMUM OUTPUT : 650nm LASER
CLASS II LASER PRODUCT
THIS DEVICE COMPLIES WITH 21 CFR CHAPTER 1, SUBCHAPTER J.